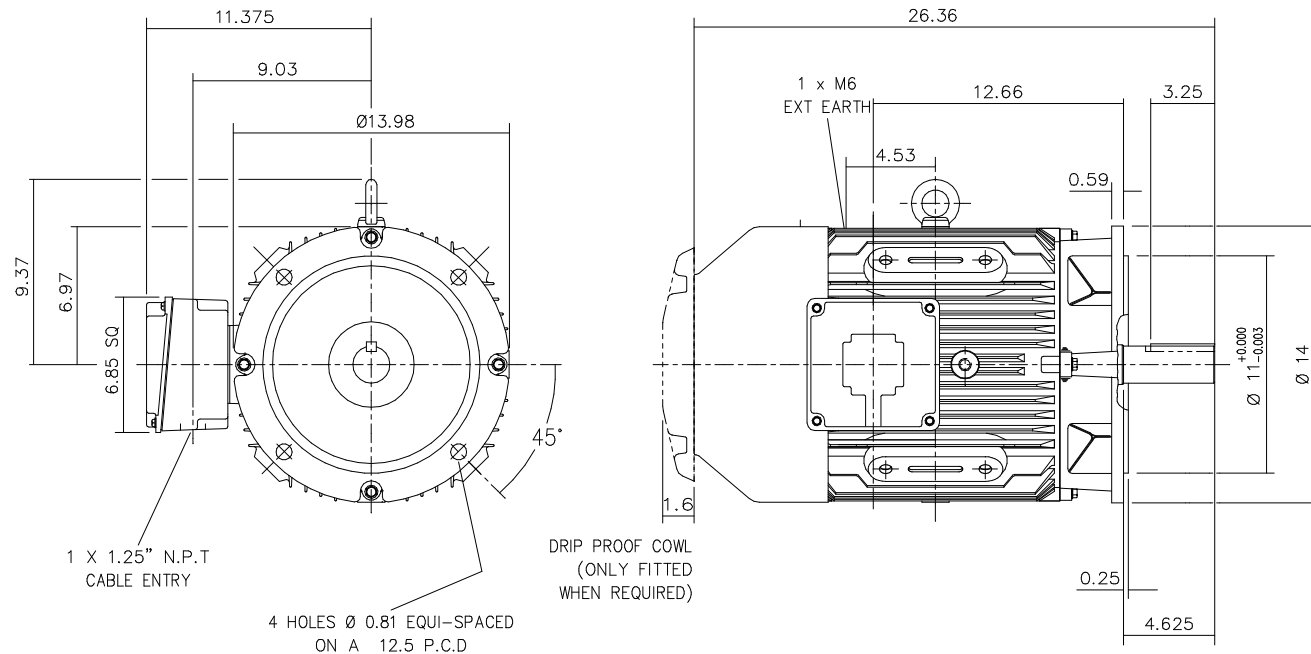


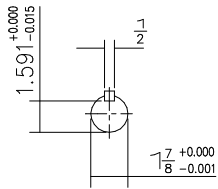
DRG. No. Y35GH002/1
 DRG. REF.



1 X 1.25" N.P.T
 CABLE ENTRY

4 HOLES Ø 0.81 EQUI-SPACED
 ON A 12.5 P.C.D

DRIP PROOF COWL
 (ONLY FITTED
 WHEN REQUIRED)



VIEW ON DRIVE END
 EXTENSION

DRAIN HOLES: - WHEN TERMINAL BOX IS MOVED FROM STANDARD POSITION
 THEY WILL NEED TO BE PLUGGED AND RE-LOCATED ELSEWHERE - IF REQUIRED
 TERMINAL BOX POSITION : - CAN BE ARRANGED AT EITHER 9, 12 OR 3 O'CLOCK
 CONDUIT ENTRIES: - TERMINAL BOX CAN BE ROTATED AT 90° INTERVALS
 (CONDUIT ENTRY POSITION SHOWN FOR ILLUSTRATION ONLY)

CUSTOMER		
ORDER No.		
SERIAL No.		
FRAME SIZE		
KW.	RPM.	
Hz	PHASE	
VOLTS	POLES	
BRGS.	DE.	NDE.
MOTOR NETT WT.		Kg.
SPECIAL REMARKS		

ALL DIMENSIONS IN INCHES.



**BROOK
 CROMPTON**

Huddersfield, HD1 3LJ
 ENGLAND

SHEET SIZE	TITLE
A3	OUTLINE DIMENSION DRAWING W CAST IRON TOTALLY ENCLOSED FAN COOLED 284/6T FRAME FLANGE MOUNTED MOTOR

	NAME	DATE
DRAWN	VLS	11-01-01
CHECKED	RR	11-01-01
SCALE	1 : 6	

DRG. No.	Y35GH002/1	
DRG. REF.		
REVISION:	VLS	DATE 16-07-02