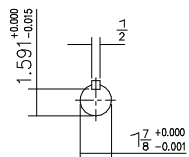
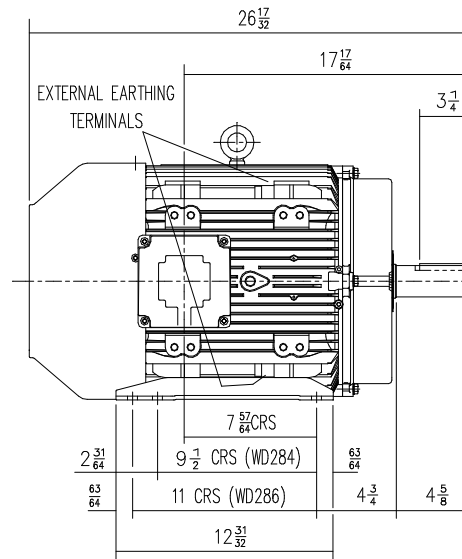
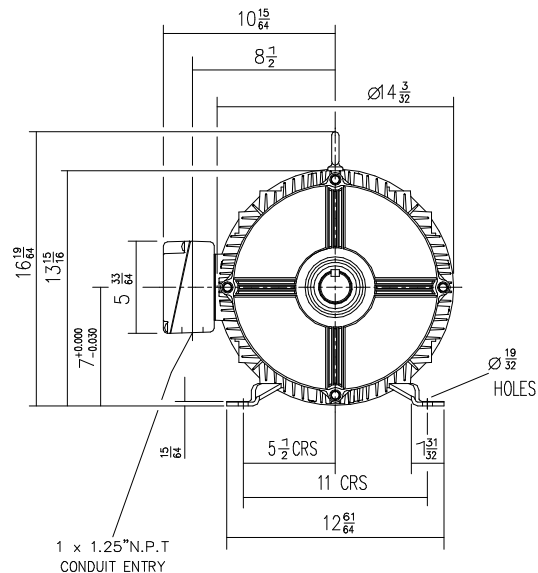


DRG. No. W35GF000/1
 DRG. REF.



VIEW ON DRIVE END
EXTENSION

DRAIN HOLES: - WHEN TERMINAL BOX IS MOVED FROM STANDARD POSITION THEY WILL NEED TO BE PLUGGED AND RE-LOCATED ELSEWHERE - IF REQUIRED
 TERMINAL BOX POSITION: - CAN BE ARRANGED AT EITHER 9, 12, OR 3 O'CLOCK BY MOVING
 STANDARD TERMINAL BOX POSITION IS 9 O'CLOCK AS SHOWN
 CONDUIT ENTRIES: - TERMINAL BOX CAN BE ROTATED AT 90° INTERVALS
 (CONDUIT ENTRY POSITION SHOWN FOR ILLUSTRATION ONLY)

CUSTOMER		
ORDER No.		
PART No.		
OUR ORDER No.		
FRAME SIZE		
KW.	RPM.	
Hz	PHASE	
VOLTS	POLES	
BRGS.	DE.	NDE.
MOTOR NETT WT.		Kg.
SPECIAL REMARKS		

ALL DIMENSIONS IN INCHES



FIRST ANGLE
PROJECTION

BROOK CROMPTON

Huddersfield, HD1 3LJ
ENGLAND

SHEET SIZE: A3
 TITLE: OUTLINE DIMENSION DRAWING W ALUMINIUM TOTLLY ENCLOSED FAN COOLED 284/6T FRAME FOOT MOUNTED MOTOR

	NAME	DATE
DRAWN	MI	17-11-95
CHECKED	JWD	17-11-95
SCALE	1:6	

DRG. No.	W35GF000/1		
DRG. REF.			
REVISION:	VLS	DATE	18-04-02