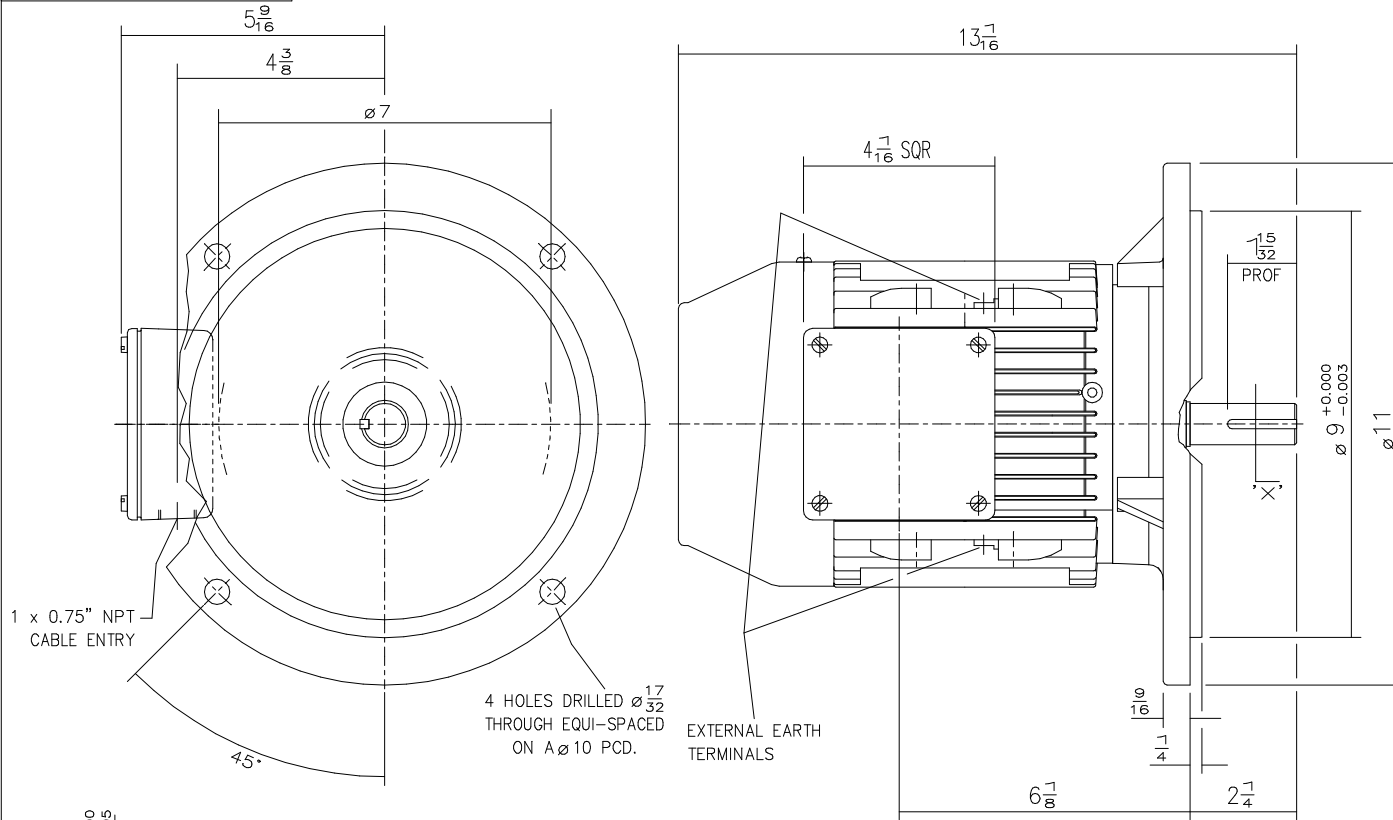


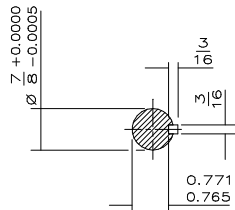
DRG. No. W31GH001/1
 DRG. REF.



1 x 0.75" NPT
 CABLE ENTRY

4 HOLES DRILLED $\phi \frac{17}{32}$
 THROUGH EQUI-SPACED
 ON A $\phi 10$ PCD.

EXTERNAL EARTH
 TERMINALS



SECTION ON 'X'

ALL DIMENSIONS IN INCHES.
 TERMINAL BOX CAN BE ARRANGED IN 3 OR 12 O'CLOCK POSITIONS.
 CONDUIT ENTRIES:- TERMINAL BOX CAN BE ROTATED AT 90° INTERVALS
 (CONDUIT ENTRY POSITION SHOWN FOR ILLUSTRATION ONLY)

CUSTOMER		
ORDER No.		
PART No.		
OUR ORDER No.		
FRAME SIZE		
KW.	RPM.	
Hz	PHASE	
VOLTS	POLES	
BRGS.	DE.	NDE.
MOTOR NETT WT.	Kg.	
SPECIAL REMARKS		

(ALL DIMENSIONS IN INCHES)



**BROOK
 CROMPTON**

Huddersfield, HD1 3LJ
 ENGLAND

SHEET SIZE	TITLE
A3	OUTLINE DIMENSION DRAWING W ALUMINIUM TOTALLY ENCLOSED FAN COOLED 143/5 FRAME FLANGE MOUNTED MOTOR

	NAME	DATE
DRAWN	DRM	14-07-98
CHECKED	DJR	23-07-98
SCALE	1: 2.5	

DRG. No.	W31GH001/0
DRG. REF.	
REVISION:	DATE