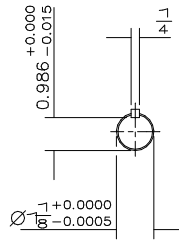
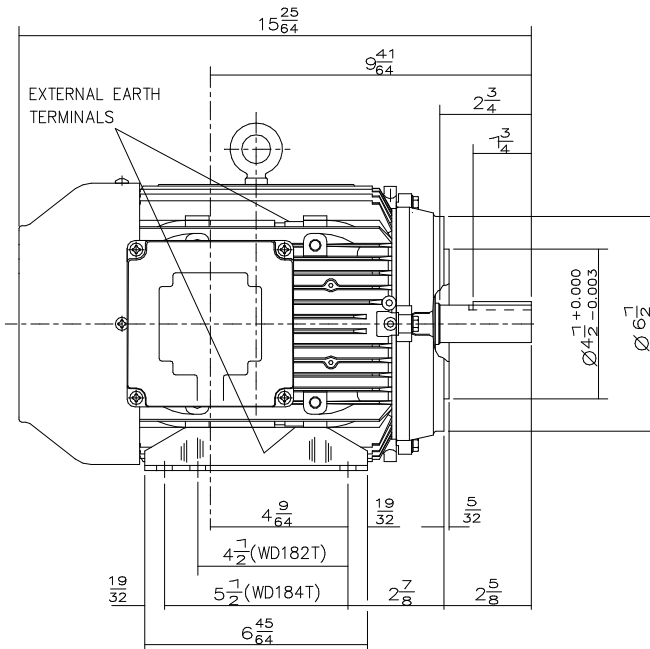
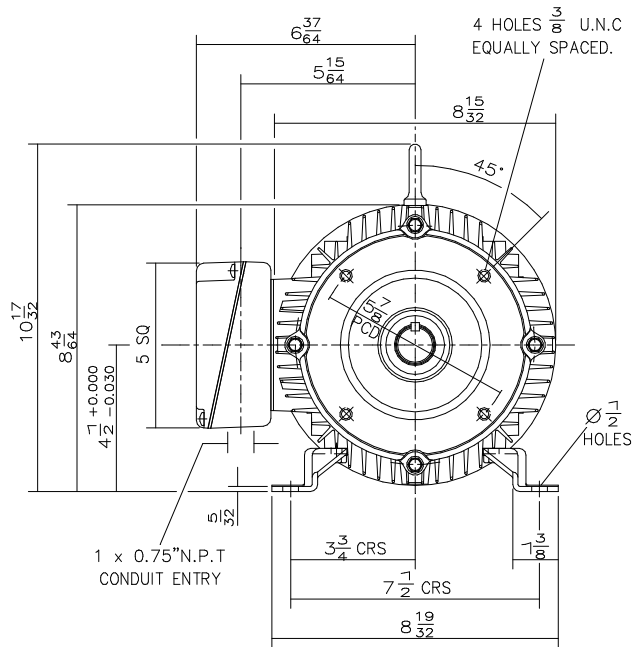


DRG. No. W32GE001/2
 DRG. REF.

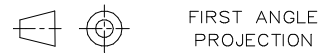


VIEW ON END OF SHAFT

TERMINAL BOX POSITION: - CAN BE ARRANGED AT EITHER 9, 12 OR 3 O'CLOCK BY MOVING STANDARD TERMINAL BOX POSITION IS 9 O'CLOCK AS SHOWN.
 CONDUIT ENTRIES: - TERMINAL BOX CAN BE ROTATED AT 90 INTERVALS. (CONDUIT ENTRY POSITION SHOWN FOR ILLUSTRATION ONLY).

CUSTOMER		
ORDER No.		
PART No.		
OUR ORDER No.		
FRAME SIZE		
KW.	RPM.	
Hz	PHASE	
VOLTS	POLES	
BRGS.	DE.	NDE.
MOTOR NETT WT.		Kg.
SPECIAL REMARKS		

ALL DIMENSIONS IN INCHES



BROOK CROMPTON

Huddersfield, HD1 3LJ
 ENGLAND

SHEET SIZE A3	TITLE	OUTLINE DIMENSION DRAWING 'W' ALUMINIUM TOTALLY ENCLOSED FAN COOLED 182/4T FRAME FOOT & 'C' INCH FACE (4.5" SPIGOT) MOUNTED MOTOR.
	NAME	MI
	CHECKED	JWD
	SCALE	1: 3.5

DATE	31-10-95
DATE	31-10-95

DRG. No.	W32GE001/2		
DRG. REF.			
REVISION:	DH	DATE	07-03-02