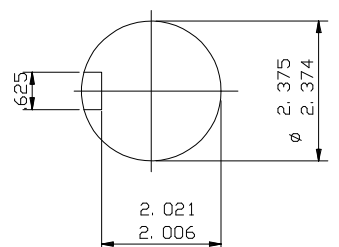


CABLE ENTRY  
SCREWED 3" N. P. T.

2 LIFTING LUGS  
DIAGONALLY OPPOSITE

4 HOLES .8125  
EQUALLY SPACED  
ON 16 P. C. D.

4 HOLES FOR .625 BOLTS



ENLARGED VIEW OF  
SHAFT EXTENSION.  
(SCALE 1: 2)

NOTE: -  
TERMINAL BOX CAN BE TOP OR RIGHT  
HAND SIDE MOUNTED BY REFITTING FEET  
90° IN APPROPRIATE DIRECTION.  
CABLE ENTRY CAN BE SUPPLIED IN  
ANY ONE OF FOUR POSITIONS AT  
90° INTERVALS.

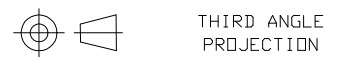
CUSTOMER		
ORDER No.		
SERIAL No.		
FRAME SIZE		
HP	RPM.	
Hz	PHASE 3	
VOLTS	POLES	
BRGS.	DE.	NDE.
MOTOR NETT. WT.		Kg.
INSULATION CLASS		
TEMPERATURE RISE °C		
DESIGN AMBIENT TEMPERATURE °C		
HEATER WATTS & VOLTS		WATTS, VOLTS

REMARKS

**BROOK CROMPTON**  
PRELIMINARY

Large Industrial Motors  
Guiseley, LEEDS LS20 9NZ

ALL DIMENSIONS IN INCHES



**BROOK CROMPTON**

Large Industrial Motors  
GUISELEY, LEEDS, LS20 9NZ.

NOTE 1  
\* ENDPLAY WILL BE PROVIDED FOR ENDTHRUST  
PROTECTION WHEN CUSTOMERS NOTIFY US OF THEIR  
INTENTION TO USE RIGID COUPLINGS AND DRIVEN  
MACHINES WITHOUT ENDPLAY.

OUTLINE DIMENSIONS OF STANDARD FOOT/D FLANGE MOUNTED INCH A. C. MOTOR  
TO NEMA STD. MG1. TOTALLY ENCLOSED FAN COOLED.  
FITTED WITH SIDE MOUNTED TERMINAL BOX  
FRAME SIZE : - W-DF365T-N

SCALE	1:7	DATE
DRAWN	B.Thoms	3.2.94
CHECKED	B.J.T.	3.2.94
APPROVED	I.J.W.	3.2.94

DRG. No.	M9520		
REVISION:	A	SW	DATE
			24. 8. 99