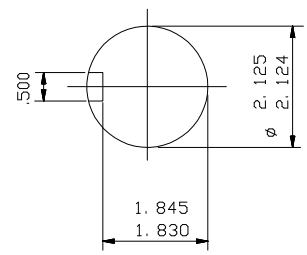


CABLE ENTRY SCREWED 2" N. P. T.



ENLARGED VIEW OF SHAFT EXTENSION

4 HOLES FOR .625 BOLTS

NOTE: -  
 TERMINAL BOX CAN BE TOP OR RIGHT  
 HAND SIDE MOUNTED BY REFITTING FEET  
 90° IN APPROPRIATE DIRECTION.  
 CABLE ENTRY CAN BE SUPPLIED IN  
 ANY ONE OF FOUR POSITIONS AT  
 90° INTERVALS.

CUSTOMER		
ORDER No.		
SERIAL No.		
FRAME SIZE		
HP	RPM.	
Hz	PHASE 3	
VOLTS	POLES	
BRGS.	DE.	NDE.
MOTOR NETT. WT.	Kg.	
INSULATION CLASS		
TEMPERATURE RISE °C		
DESIGN AMBIENT TEMPERATURE °C		
HEATER WATTS & VOLTS		VOLTS

REMARKS

**BROOK CROMPTON**  
 PRELIMINARY

Large Industrial Motors  
 Guiseley, LEEDS LS20 9NZ

ALL DIMENSIONS IN INCHES



**BROOK CROMPTON**  
 Large Industrial Motors  
 GUISELEY, LEEDS, LS20 9NZ.

NOTE 1  
 \* ENDPLAY WILL BE PROVIDED FOR ENDTHRUST PROTECTION WHEN CUSTOMERS NOTIFY US OF THEIR INTENTION TO USE RIGID COUPLINGS AND DRIVEN MACHINES WITHOUT ENDTPLAY.

OUTLINE DIMENSIONS OF STANDARD FOOT/C FACE MOUNTED INCH A. C. MOTOR TO NEMA STD. MG1. TOTALLY ENCLOSED FAN COOLED. FITTED WITH SIDE MOUNTED TERMINAL BOX FRAME SIZE: - WNDF324T.

SCALE	1:6	DATE
DRAWN	B. J. T.	16.6.94
CHECKED	B. J. T.	16.6.94
APPROVED	I. J. W.	16.6.94

DRG. No.	M9703	
REVISION:		DATE