

CUSTOMER	
ORDER No.	
SERIAL No.	
FRAME SIZE	
HP	R.P.M.
Hz	PHASE 3
VOLTS	POLES
BRGS. D.E	N.D.E
MOTOR NETT. WT. Kg.	
INSULATION CLASS	
TEMPERATURE RISE °C	
DESIGN AMBIENT TEMPERATURE °C	
HEATER WATTS & VOLTS (IF FITTED)	
WATTS,	VOLTS

REMARKS

**BROOK CROMPTON**  
PRELIMINARY

Large Industrial Motors  
GISELEY, LEEDS LS20 9NZ

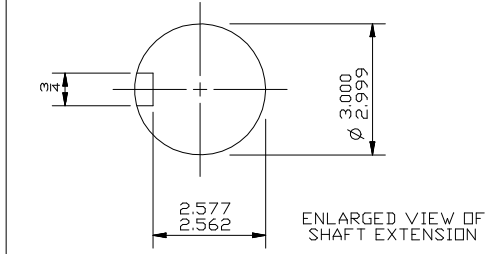
ALL DIMENSIONS IN INCHES

THIRD ANGLE PROJECTION

**BROOK CROMPTON**

Large Industrial Motors  
GISELEY, LEEDS, LS20 9NZ.

NOTE:-  
 TERMINAL BOX CAN BE TOP OR RIGHT  
 HAND SIDE MOUNTED BY REFITTING FEET  
 90° IN APPROPRIATE DIRECTION.  
 CABLE ENTRY CAN BE SUPPLIED IN  
 ANY ONE OF FOUR POSITIONS AT  
 90° INTERVALS.



NOTE!  
 ENDPLAY WILL BE PROVIDED FOR ENDTHRUST  
 PROTECTION WHEN CUSTOMERS NOTIFY US OF THEIR  
 INTENTION TO USE RIGID COUPLINGS AND DRIVEN  
 MACHINES WITHOUT ENDPLAY.

OUTLINE DIMENSIONS OF STANDARD FOOT MOUNTED INCH A.C. MOTOR  
 TO NEMA STD. MG1. TOTALLY ENCLOSED FAN COOLED.  
 FRAME SIZE:- W-DF587SZ.

SCALE	1:10	DATE
DRAWN	B.J.T.	18.12.97
CHECKED	B.J.T.	18.12.97
APPROVED	I.J.W.	18.12.97

DRG. No.	M20840
REVISION:	DATE