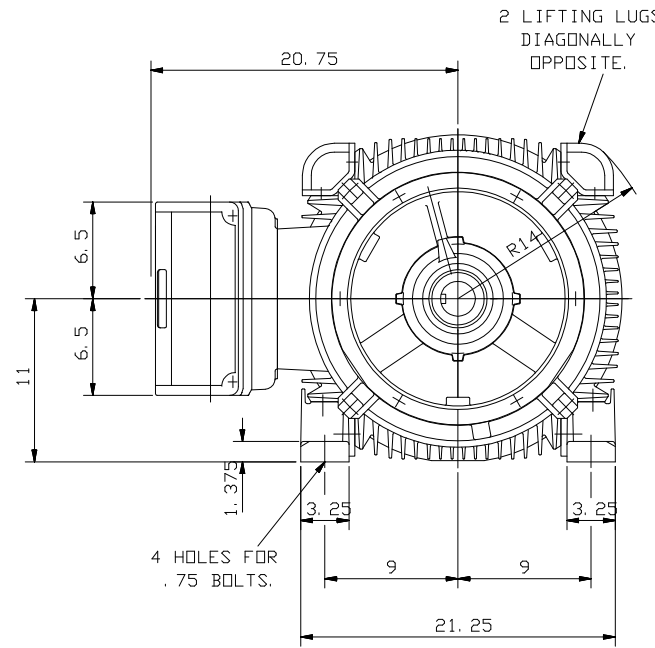
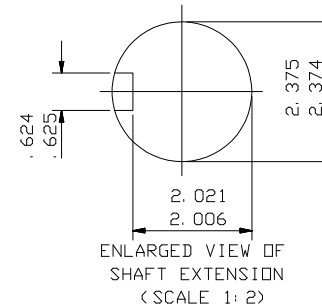


MAINS CABLE ENTRY
SCREWED 3" N. P. T.



2 LIFTING LUGS
DIAGONALLY
OPPOSITE.

4 HOLES FOR
.75 BOLTS.



ENLARGED VIEW OF
SHAFT EXTENSION
(SCALE 1: 2)

NOTE: -
TERMINAL BOX CAN BE TOP OR RIGHT
HAND SIDE MOUNTED BY REFITTING FEET
90° IN APPROPRIATE DIRECTION.
CABLE ENTRY CAN BE SUPPLIED IN
ANY ONE OF FOUR POSITIONS AT
90° INTERVALS.

CUSTOMER		
ORDER No.		
SERIAL No.		
FRAME SIZE		
kW		RPM.
Hz		PHASE 3
VOLTS		POLES
BRGS.	DE.	NDE.
MOTOR NETT. WT.		Kg.
INSULATION CLASS		
TEMPERATURE RISE		°C
DESIGN AMBIENT TEMPERATURE		°C
HEATER WATTS & VOLTS		WATTS, VOLTS

REMARKS

Large Industrial Motors
Guiseley, LEEDS LS20 9NZ

ALL DIMENSIONS IN INCHES



BROOK CROMPTON
Large Industrial Motors
GUISELEY, LEEDS, LS20 9NZ.

NOTE 1
2.5 ENDPLAY WILL BE PROVIDED FOR ENDTHRUST
PROTECTION WHEN CUSTOMERS NOTIFY US OF THEIR
INTENTION TO USE RIGID COUPLINGS AND DRIVEN
MACHINES WITHOUT ENDPLAY.

OUTLINE DIMENSIONS OF STANDARD FOOT MOUNTED INCH A. C. MOTOR
TO NEMA STD. MG1. TOTALLY ENCLOSED FAN COOLED.
FITTED WITH SIDE MOUNTED TERMINAL BOX
FRAME SIZE: W-DF445TS-E (2 POLE ONLY).

SCALE	1:8	DATE
DRAWN	M.E	15.12.99
CHECKED	J.M.L	15.12.99
APPROVED	J.M.L	15.12.99

DRG. No.	M21803
REVISION:	DATE