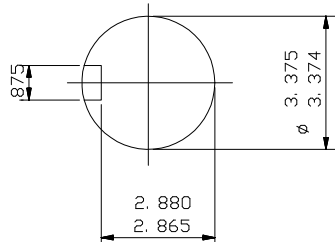
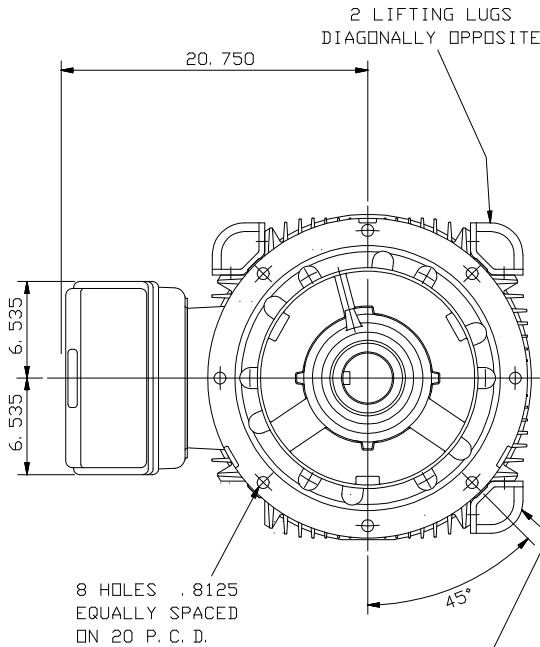


CABLE ENTRY
SCREWED 3" N. P. T.



ENLARGED VIEW OF
SHAFT EXTENSION
(SCALE 1:2)



2 LIFTING LUGS
DIAGONALLY OPPOSITE

THIS LIFTING LUG FITTED
ONLY WHEN MOTOR IS
VERTICALLY MOUNTED.

NOTE: -
CABLE ENTRY CAN BE SUPPLIED IN
ANY ONE OF FOUR POSITIONS AT
90° INTERVALS.

NOTE: -
STANDARD MACHINES ARE ARRANGED FOR HORIZONTAL OVERHUNG MOUNTING.
CUSTOMERS SHOULD NOTIFY US WHEN ORDERING IF VERTICAL MOUNTING
IS REQUIRED. IF VERTICAL, THE MOTOR THRUST BEARING MUST NOT BE
ALLOWED TO TAKE ANY LOAD OTHER THAN THE WEIGHT OF THE ROTOR
WITHOUT OUR APPROVAL.

| | | |
|-------------------------------|---------|--------------|
| CUSTOMER | | |
| ORDER No. | | |
| SERIAL No. | | |
| FRAME SIZE | | |
| HP | RPM. | |
| Hz | PHASE 3 | |
| VOLTS | POLES | |
| BRGS. | DE. | NDE. |
| MOTOR NETT. WT. | Kg. | |
| INSULATION CLASS | | |
| TEMPERATURE RISE °C | | |
| DESIGN AMBIENT TEMPERATURE °C | | |
| HEATER WATTS & VOLTS | | WATTS, VOLTS |

REMARKS

BROOK CROMPTON
PRELIMINARY

Large Industrial Motors
Guiseley, LEEDS LS20 9NZ

ALL DIMENSIONS IN INCHES



BROOK CROMPTON

Large Industrial Motors
GUISELEY, LEEDS, LS20 9NZ.

NOTE !
* ENDPLAY WILL BE PROVIDED FOR ENDTHRUST
PROTECTION WHEN CUSTOMERS NOTIFY US OF THEIR
INTENTION TO USE RIGID COUPLINGS AND DRIVEN
MACHINES WITHOUT ENDPLAY.

OUTLINE DIMENSIONS OF STANDARD D FLANGE MOUNTED INCH A. C. MOTOR
TO NEMA STD. MG1. TOTALLY ENCLOSED FAN COOLED.
FITTED WITH SIDE MOUNTED TERMINAL BOX
FRAME SIZE : - W-DF447T-N (4 POLE UP)

| | | |
|----------|-------|----------|
| SCALE | 1:8 | DATE |
| DRAWN | L. M. | 08.06.01 |
| CHECKED | J. P. | 08.06.01 |
| APPROVED | J. P. | 08.06.01 |

| | |
|-----------|--------|
| DRG. No. | M22384 |
| REVISION: | DATE |