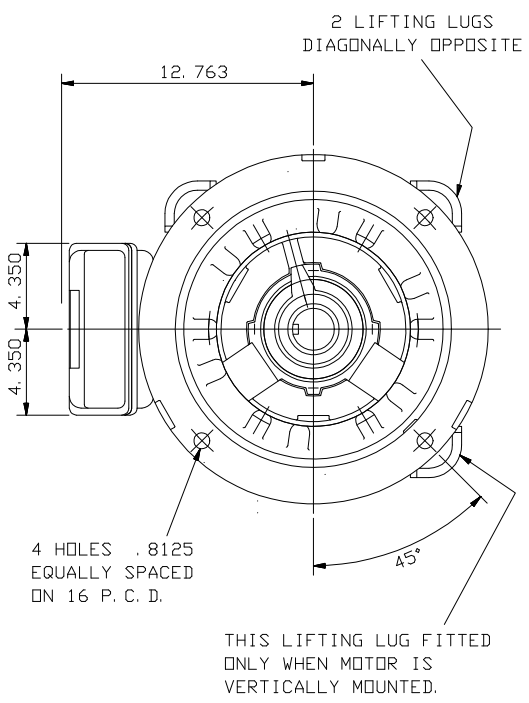
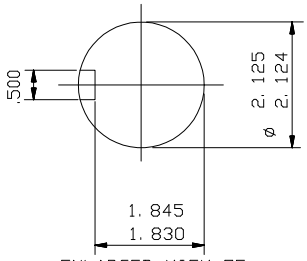


CABLE ENTRY
SCREWED 2" N. P. T.



THIS LIFTING LUG FITTED ONLY WHEN MOTOR IS VERTICALLY MOUNTED.



ENLARGED VIEW OF
SHAFT EXTENSION
(SCALE 1: 2)

NOTE: -
CABLE ENTRY CAN BE SUPPLIED IN ANY ONE OF FOUR POSITIONS AT 90° INTERVALS.

NOTE: -
STANDARD MACHINES ARE ARRANGED FOR HORIZONTAL OVERHUNG MOUNTING. CUSTOMERS SHOULD NOTIFY US WHEN ORDERING IF VERTICAL MOUNTING IS REQUIRED. IF VERTICAL, THE MOTOR THRUST BEARING MUST NOT BE ALLOWED TO TAKE ANY LOAD OTHER THAN THE WEIGHT OF THE ROTOR WITHOUT OUR APPROVAL.

CUSTOMER			
ORDER No.			
SERIAL No.			
FRAME SIZE			
HP		RPM.	
Hz		PHASE	3
VOLTS		POLES	
BRGS.	DE.	NDE.	
MOTOR NETT. WT.		Kg.	
INSULATION CLASS			
TEMPERATURE RISE		°C	
DESIGN AMBIENT TEMPERATURE		°C	
HEATER WATTS & VOLTS		WATTS,	VOLTS

REMARKS

BROOK CROMPTON
PRELIMINARY

Large Industrial Motors
Guiseley, LEEDS LS20 9NZ

ALL DIMENSIONS IN INCHES

THIRD ANGLE PROJECTION

BROOK CROMPTON

Large Industrial Motors
GUISELEY, LEEDS, LS20 9NZ.

NOTE 1
* ENDPLAY WILL BE PROVIDED FOR ENDTHRUST PROTECTION WHEN CUSTOMERS NOTIFY US OF THEIR INTENTION TO USE RIGID COUPLINGS AND DRIVEN MACHINES WITHOUT ENDPLAY.

OUTLINE DIMENSIONS OF STANDARD D FLANGE MOUNTED INCH A. C. MOTOR TO NEMA STD. MG1. TOTALLY ENCLOSED FAN COOLED. FITTED WITH SIDE MOUNTED TERMINAL BOX
FRAME SIZE :- W-DF326T-N (4 POLE UP)

SCALE	1/6	DATE
DRAWN	B. J. T.	11.2.94
CHECKED	B. J. T.	11.2.94
APPROVED	I. J. W.	11.2.94

DRG. No.	M9531	
REVISION:		DATE