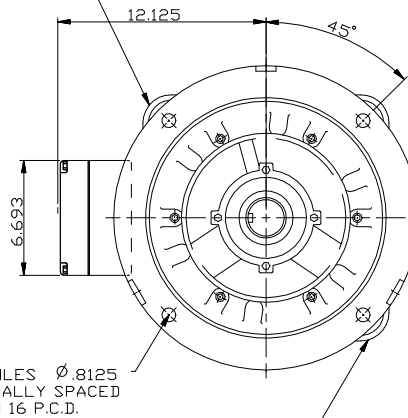
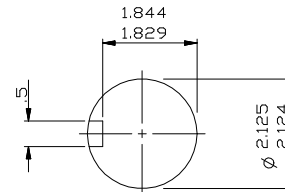


TWO LIFTING LUGS
DIAGONALLY
OPPOSITE.



THIS LIFTING LUG FITTED
ONLY WHEN MOTOR IS
VERTICALLY MOUNTED.



SECTION THROUGH
SHAFT EXTENSION.
(SCALE 1:2).

NOTE:-
CABLE ENTRY CAN BE
SUPPLIED IN ANY ONE OF FOUR
POSITIONS AT 90° INTERVALS.

NOTE1
STANDARD MACHINES ARE ARRANGED FOR HORIZONTAL OVERHUNG MOUNTING.
CUSTOMERS SHOULD NOTIFY US WHEN ORDERING IF VERTICAL MOUNTING
IS REQUIRED. IF VERTICAL, THE MOTOR THRUST BEARING MUST
NOT BE ALLOWED TO TAKE ANY LOAD OTHER THAN THE WEIGHT OF
THE ROTOR WITHOUT OUR APPROVAL.

CUSTOMER	
ORDER No.	
SERIAL No.	
FRAME SIZE	
KW	R.P.M.
Hz	PHASE 3
VOLTS	POLES
BRGS.	DE N.D.E
MOTOR NETT. WT.	Kg.
INSULATION CLASS	
TEMPERATURE RISE °C	
DESIGN AMBIENT TEMPERATURE °C	
HEATER WATTS & VOLTS (IF FITTED)	
- WATTS, - VOLTS	
REMARKS	



ALL DIMENSIONS IN INCHES



**BROOK
CROMPTON**

Large Industrial Motors
GUISELEY, LEEDS, LS20 9NZ.

NOTE1
ENDPLAY WILL BE PROVIDED FOR ENDTHRUST
PROTECTION WHEN CUSTOMERS NOTIFY US OF THEIR
INTENTION TO USE RIGID COUPLINGS AND DRIVEN
MACHINES WITHOUT ENDPLAY.

OUTLINE DIMENSIONS OF STANDARD FLANGE MOUNTED INCH A.C
MOTOR TO NEMA STD. MG1. TOTALLY ENCLOSED FAN VENTILATED.
TERMINAL BOX MOUNTED ON LEFT HAND SIDE VIEWED ON DRIVE END.
FRAME SIZE. W-DF324TD-X (4 POLE UPWARDS).

SCALE	1:6	DATE	
DRAWN	PAH	16.12.99	
CHECKED	JML	16.12.99	
APPROVED	JML	16.12.99	

DRG. No.	M21641
REVISION:	DATE