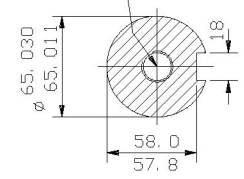


TAPPED HOLE
M20x42 DEEP



ENLARGED SECTION THROUGH
SHAFT EXTENSION
(SCALE 1: 3)

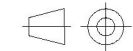
EXTERNAL EARTH POSITION
(SHOWN DOTTED BEHIND T/BOX)

NOTE! TERMINAL BOX CAN BE TOP OR SIDE MOUNTED
(LEFT OR RIGHT) BY REFITTING FEET 90°
IN APPROPRIATE DIRECTION.
CABLE ENTRY CAN BE SUPPLIED IN ANY ONE
OF FOUR POSITIONS AT 90° INTERVALS.

CUSTOMER		
ORDER No.		
SERIAL No.		
FRAME SIZE		
kW	RPM.	
Hz	PHASE 3	
VOLTS	POLES	
BRGS.	DE.	NDE.
MOTOR NETT. WT.	Kg.	
INSULATION CLASS		
TEMPERATURE RISE	° C	
DESIGN AMBIENT TEMPERATURE	° C	
HEATER WATTS & VOLTS		
	WATTS,	VOLTS

REMARKS

ALL DIMENSIONS IN MILLIMETRES



FIRST ANGLE
PROJECTION

**BROOK
CROMPTON**

NOTE 1
2.5 ENDPLAY WILL BE PROVIDED FOR ENDTHRUST
PROTECTION WHEN CUSTOMERS NOTIFY US OF THEIR
INTENTION TO USE RIGID COUPLINGS AND DRIVEN
MACHINES WITHOUT ENDPLAY.

OUTLINE DIMENSIONS OF STANDARD FOOT MOUNTED METRIC A. C. MOTOR
TOTALLY ENCLOSED FAN VENTILATED.
FITTED WITH SIDE MOUNTED TERMINAL BOX.
FRAME SIZE : - W-DF315M (2 POLE)

SCALE	1: 8	DATE
DRAWN		
CHECKED		
APPROVED		

DRG. No.		
REVISION:		DATE