

CUSTOMER		
ORDER No.		
SERIAL No.		
FRAME SIZE		
kW	RPM.	
Hz	PHASE 3	
VOLTS	POLES	
BRGS.	DE.	NDE.
MOTOR NETT. WT.	Kg.	
INSULATION CLASS		
TEMPERATURE RISE	° C	
DESIGN AMBIENT TEMPERATURE	° C	
HEATER WATTS & VOLTS		
	WATTS,	VOLTS

REMARKS

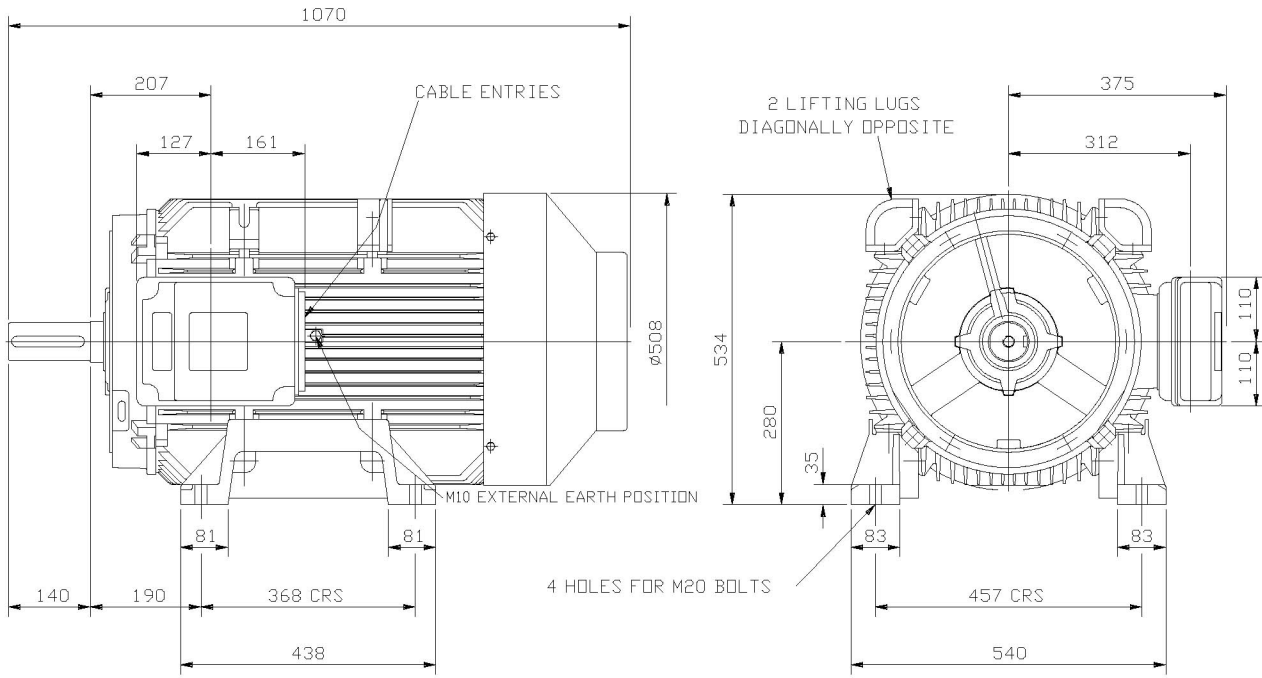
ALL DIMENSIONS IN MILLIMETRES

FIRST ANGLE PROJECTION

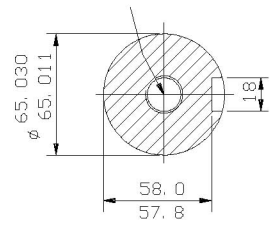
BROOK CROMPTON

Large Industrial Motors
GUISELEY, LEEDS, LS20 9NZ.

SCALE	1: 8	DATE	DRG. No.
DRAWN			
CHECKED			
APPROVED			
REVISION:		DATE	



TAPPED HOLE
M20x42 DEEP



SECTION THROUGH
SHAFT EXTENSION
(SCALE 1: 2.5)

NOTE! TERMINAL BOX CAN BE TOP OR SIDE MOUNTED (LEFT OR RIGHT) BY REFITTING FEET 90° IN APPROPRIATE DIRECTION. CABLE ENTRY CAN BE SUPPLIED IN ANY ONE OF FOUR POSITIONS AT 90° INTERVALS.

NOTE 1
2.5 ENDPLAY WILL BE PROVIDED FOR ENDTHRUST PROTECTION WHEN CUSTOMERS NOTIFY US OF THEIR INTENTION TO USE RIGID COUPLINGS AND DRIVEN MACHINES WITHOUT ENDPLAY.

OUTLINE DIMENSIONS OF STANDARD FOOT MOUNTED METRIC A. C. MOTOR
TOTALLY ENCLOSED FAN VENTILATED.
FITTED WITH SIDE MOUNTED TERMINAL BOX.
FRAME SIZE : - W-DF280S (2 POLE)

SCALE	1: 8	DATE
DRAWN		
CHECKED		
APPROVED		

DRG. No.			
REVISION:		DATE	