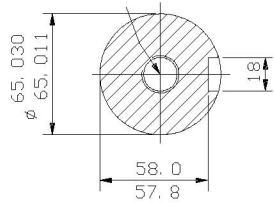


TAPPED HOLE
M20x42 DEEP



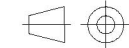
SECTION THROUGH
SHAFT EXTENSION
(SCALE 1: 2.5)

NOTE! TERMINAL BOX CAN BE TOP OR SIDE
MOUNTED (LEFT OR RIGHT) BY REFITTING FEET
90° IN APPROPRIATE DIRECTION.
CABLE ENTRY CAN BE SUPPLIED IN
ANY ONE OF FOUR POSITIONS AT
90° INTERVALS.

CUSTOMER		
ORDER No.		
SERIAL No.		
FRAME SIZE		
kW	RPM.	
Hz	PHASE 3	
VOLTS	POLES	
BRGS.	DE.	NDE.
MOTOR NETT. WT.		Kg.
INSULATION CLASS		
TEMPERATURE RISE		° C
DESIGN AMBIENT TEMPERATURE		° C
HEATER WATTS & VOLTS		
		WATTS, VOLTS

REMARKS

ALL DIMENSIONS IN MILLIMETRES



FIRST ANGLE
PROJECTION

**BROOK
CROMPTON**

NOTE 1
2.5 ENDPLAY WILL BE PROVIDED FOR ENDTHRUST
PROTECTION WHEN CUSTOMERS NOTIFY US OF THEIR
INTENTION TO USE RIGID COUPLINGS AND DRIVEN
MACHINES WITHOUT ENDPLAY.

OUTLINE DIMENSIONS OF STANDARD FOOT MOUNTED METRIC A. C.
TOTALLY ENCLOSED FAN VENTILATED,
FITTED WITH SIDE MOUNTED TERMINAL BOX.
FRAME SIZE : - W-DF280M (2 POLE)

SCALE	1: 9	DATE
DRAWN		
CHECKED		
APPROVED		

REVISION: DATE