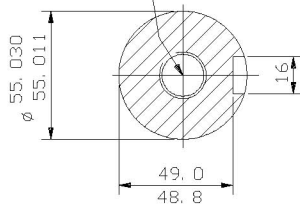


TAPPED HOLE  
M20x42 DEEP  
UP SHAFT END



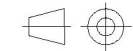
SECTION THROUGH  
SHAFT EXTENSION  
(SCALE 1: 2)

NOTE! TERMINAL BOX CAN BE TOP OR  
SIDE MOUNTED (LEFT OR RIGHT) BY  
REFITTING FEET 90° IN APPROPRIATE  
DIRECTION. CABLE ENTRY CAN BE TURNED  
TO ANY ONE OF FOUR POSITIONS AT  
90° INTERVALS

CUSTOMER		
ORDER No.		
SERIAL No.		
FRAME SIZE		
kw	RPM.	
Hz	PHASE 3	
VOLTS	POLES	
BRGS.	DE.	NDE.
MOTOR NETT. WT.	Kg.	
INSULATION CLASS		
TEMPERATURE RISE	° C	
DESIGN AMBIENT TEMPERATURE	° C	
HEATER WATTS & VOLTS		
	WATTS,	VOLTS

REMARKS

ALL DIMENSIONS IN MILLIMETRES



FIRST ANGLE  
PROJECTION

**BROOK  
CROMPTON**

NOTE 1  
2.5 ENDPLOY WILL BE PROVIDED FOR ENDTHRUST  
PROTECTION WHEN CUSTOMERS NOTIFY US OF THEIR  
INTENTION TO USE RIGID COUPLINGS AND DRIVEN  
MACHINES WITHOUT ENDPLOY.

OUTLINE DIMENSIONS OF STANDARD FOOT MOUNTED METRIC A. C. MOTOR  
TOTALLY ENCLOSED FAN VENTILATED.  
WITH SIDE MOUNTED TERMINAL BOX.  
FRAME SIZE : - WDF225S (2 POLE).

SCALE	1: 6	DATE
DRAWN		
CHECKED		
APPROVED		

DRG. No.		
REVISION:		DATE