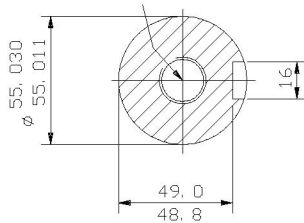


TAPPED HOLE
M20x42 DEEP



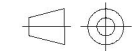
SECTION THROUGH
SHAFT EXTENSION
(SCALE 1: 2)

NOTE! TERMINAL BOX CAN BE TOP
OR SIDE MOUNTED (LEFT OR RIGHT)
BY REFITTING FEET 90° IN
APPROPRIATE DIRECTION.
CABLE ENTRY CAN BE SUPPLIED IN
ANY ONE OF FOUR POSITIONS AT
90° INTERVALS.

CUSTOMER		
ORDER No.		
SERIAL No.		
FRAME SIZE		
kW	RPM.	
Hz	PHASE 3	
VOLTS	POLES	
BRGS.	DE.	NDE.
MOTOR NETT. WT.	Kg.	
INSULATION CLASS		
TEMPERATURE RISE	° C	
DESIGN AMBIENT TEMPERATURE	° C	
HEATER WATTS & VOLTS		
	WATTS,	VOLTS

REMARKS

ALL DIMENSIONS IN MILLIMETRES



FIRST ANGLE
PROJECTION

**BROOK
CROMPTON**

NOTE 1
2.5 ENDFLAY WILL BE PROVIDED FOR ENDTHRUST
PROTECTION WHEN CUSTOMERS NOTIFY US OF THEIR
INTENTION TO USE RIGID COUPLINGS AND DRIVEN
MACHINES WITHOUT ENDFLAY.

OUTLINE DIMENSIONS OF STANDARD FOOT MOUNTED METRIC A. C.
TOTALLY ENCLOSED FAN VENTILATED.
WITH TERMINAL BOX MOUNTED ON RIGHT HAND SIDE.
FRAME SIZE : - W-DF225M (2 POLE)

SCALE	1: 6	DATE
DRAWN		
CHECKED		
APPROVED		

DRG. No.		
REVISION:		DATE