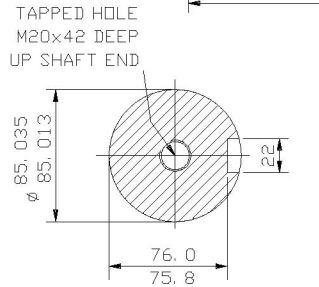
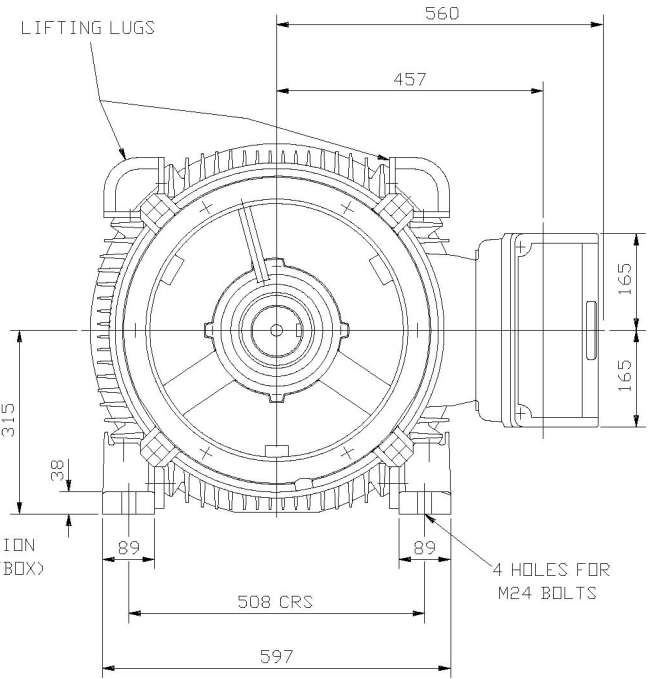


CABLE ENTRIES

EXTERNAL EARTH POSITION  
(SHOWN DOTTED BEHIND T/BOX)



ENLARGED SECTION THROUGH  
SHAFT EXTENSION  
(SCALE 1: 3)



LIFTING LUGS

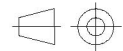
4 HOLES FOR  
M24 BOLTS

NOTE! TERMINAL BOX CAN BE TOP OR SIDE MOUNTED  
(LEFT OR RIGHT) BY REFITTING FEET 90°  
IN APPROPRIATE DIRECTION.  
CABLE ENTRY CAN BE SUPPLIED IN ANY ONE  
OF FOUR POSITIONS AT 90° INTERVALS.

CUSTOMER		
ORDER No.		
SERIAL No.		
FRAME SIZE		
kw	RPM.	
Hz	PHASE 3	
VOLTS	POLES	
BRGS.	DE.	NDE.
MOTOR NETT. WT.	Kg.	
INSULATION CLASS		
TEMPERATURE RISE	° C	
DESIGN AMBIENT TEMPERATURE	° C	
HEATER WATTS & VOLTS	WATTS,	VOLTS

REMARKS

ALL DIMENSIONS IN MILLIMETRES



FIRST ANGLE  
PROJECTION

**BROOK  
CROMPTON**

NOTE 1  
2.5 ENDPLAY WILL BE PROVIDED FOR ENDTHRUST  
PROTECTION WHEN CUSTOMERS NOTIFY US OF THEIR  
INTENTION TO USE RIGID COUPLINGS AND DRIVEN  
MACHINES WITHOUT ENDPLAY.

OUTLINE DIMENSIONS OF STANDARD FOOT MOUNTED METRIC A. C. MOTOR  
TOTALLY ENCLOSED FAN VENTILATED.  
FITTED WITH SIDE MOUNTED TERMINAL BOX.  
FRAME SIZE : - WDF315M (4 POLE UP).

SCALE	1: 8	DATE
DRAWN		
CHECKED		
APPROVED		

REVISION:      DATE