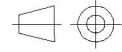


CUSTOMER		
ORDER No.		
SERIAL No.		
FRAME SIZE		
kW	RPM.	
Hz	PHASE 3	
VOLTS	POLES	
BRGS.	DE.	NDE.
MOTOR NETT. WT.	Kg.	
INSULATION CLASS		
TEMPERATURE RISE	°C	
DESIGN AMBIENT TEMPERATURE	°C	
HEATER WATTS & VOLTS		
	WATTS,	VOLTS

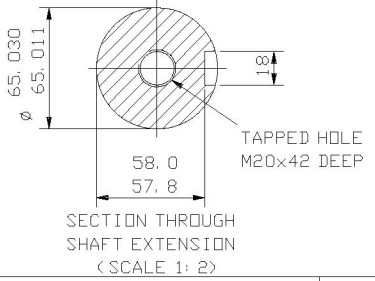
REMARKS	
ALL DIMENSIONS IN MILLIMETRES	



FIRST ANGLE PROJECTION

BROOK CROMPTON

NOTE: -
 TERMINAL BOX CAN BE SIDE MOUNTED
 < LEFT OR RIGHT > BY REFITTING FEET
 90° IN APPROPRIATE DIRECTION.
 CABLE ENTRY CAN BE SUPPLIED IN
 ANY ONE OF FOUR POSITIONS AT
 90° INTERVALS.



NOTE 1
 2.5 ENDPLAY WILL BE PROVIDED FOR ENDTHRUST PROTECTION WHEN CUSTOMERS NOTIFY US OF THEIR INTENTION TO USE RIGID COUPLINGS AND DRIVEN MACHINES WITHOUT ENDPLAY.

OUTLINE DIMENSIONS OF STD. FOOT/FLANGE MOUNTED METRIC A. C. MOTOR
 TOTALLY ENCLOSED FAN VENTILATED.
 FITTED WITH TOP MOUNTED TERMINAL BOX
 FRAME SIZE : - W-DF315L-H (2 POLE)

SCALE	1:8	DATE
DRAWN		
CHECKED		
APPROVED		

DRG. No.		
REVISION:		DATE