

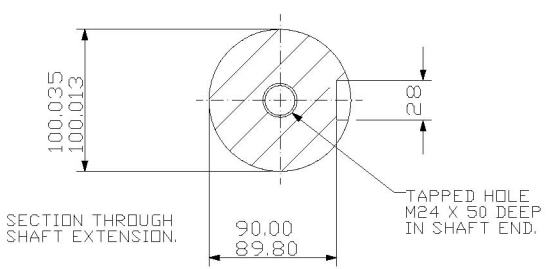
CUSTOMER		
ORDER No.		
SERIAL No.		
FRAME SIZE		
Kw	R.P.M.	
Hz	PHASE 3	
VOLTS	POLES	
BRGS.	D.E	N.D.E
MOTOR NETT. WT. Kg.		
INSULATION CLASS		
TEMPERATURE RISE °C		
DESIGN AMBIENT TEMPERATURE °C		
HEATER WATTS & VOLTS (IF FITTED)		
- WATTS, - VOLTS		

REMARKS

ALL DIMENSIONS IN MILLIMETRES



BROOK CROMPTON



NOTE!
 TERMINAL BOX CAN BE SIDE MOUNTED (LEFT OR RIGHT) BY REFITTING FEET 90° IN APPROPRIATE DIRECTION.
 CABLE ENTRY CAN BE SUPPLIED IN ANY ONE OF FOUR POSITIONS AT 90° INTERVALS.

SCALE	1:10	DATE
DRAWN		
CHECKED		
APPROVED		

DRG. No.	
REVISION:	DATE

NOTE!
 2.5 ENDPLAY WILL BE PROVIDED FOR ENDTHRUST PROTECTION WHEN CUSTOMERS NOTIFY US OF THEIR INTENTION TO USE RIGID COUPLINGS AND DRIVEN MACHINES WITHOUT ENDPLAY.

OUTLINE DIMENSIONS OF STANDARD FOOT MOUNTED METRIC A.C. MOTOR WITH "D" FLANGE AT DRIVE END.
 TOTALLY ENCLOSED FAN VENTILATED.
 FRAME SIZE:- W-DF355L-H 4-POLE UP.