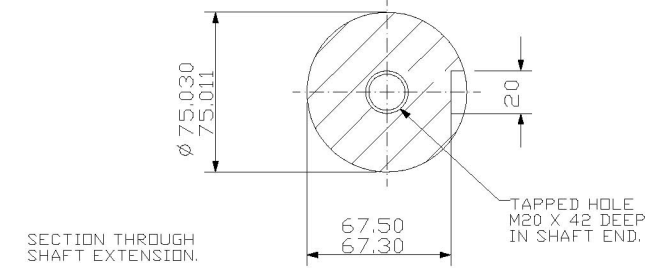


4 HOLES FOR M24 BOLTS.



NOTE!
 TERMINAL BOX CAN BE SIDE MOUNTED (LEFT OR RIGHT) BY REFITTING FEET 90° IN APPROPRIATE DIRECTION. CABLE ENTRY CAN BE SUPPLIED IN ANY ONE OF FOUR POSITIONS AT 90° INTERVALS.

CUSTOMER	
ORDER No.	
SERIAL No.	
FRAME SIZE	
Kw	R.P.M.
Hz	PHASE 3
VOLTS	POLES
BRGS.	D.E. N.D.E
MOTOR NETT. WT. Kg.	
INSULATION CLASS	
TEMPERATURE RISE °C	
DESIGN AMBIENT TEMPERATURE °C	
HEATER WATTS & VOLTS (IF FITTED)	
- WATTS, - VOLTS	

REMARKS

ALL DIMENSIONS IN MILLIMETRES



BROOK CROMPTON

NOTE!
 2.5 ENDPLAY WILL BE PROVIDED FOR ENDTHRUST PROTECTION WHEN CUSTOMERS NOTIFY US OF THEIR INTENTION TO USE RIGID COUPLINGS AND DRIVEN MACHINES WITHOUT ENDPLAY.

OUTLINE DIMENSIONS OF STANDARD FOOT MOUNTED METRIC A.C. MOTOR
 TOTALLY ENCLOSED FAN VENTILATED.
 FRAME SIZE:- W-DF355M 2-POLE ONLY.

SCALE	1:10	DATE
DRAWN		
CHECKED		
APPROVED		

DRG. No.	
REVISION:	DATE