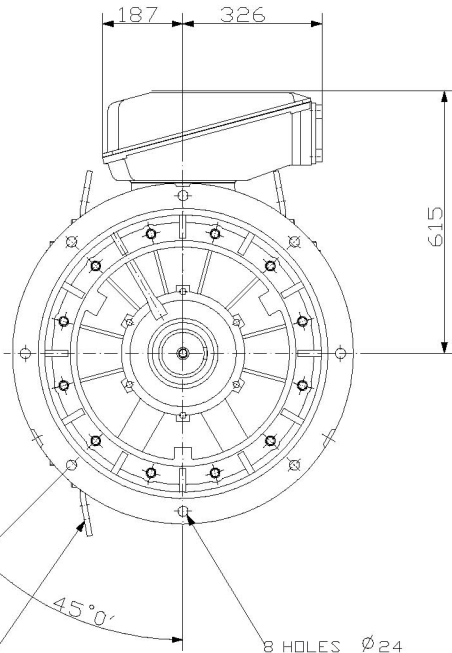
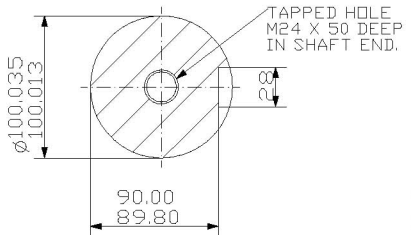


NOTE!
CABLE ENTRY CAN BE SUPPLIED
IN ANY ONE OF FOUR POSITIONS
AT 90° INTERVALS.



THIS LIFTING LUG FITTED
ONLY WHEN MOTOR IS
VERTICALLY MOUNTED.

8 HOLES $\varnothing 24$
EQUALLY SPACED
ON 740 PCD.



SECTION THROUGH
SHAFT EXTENSION.

NOTE!
STANDARD MACHINES ARE ARRANGED FOR HORIZONTAL OVERHUNG MOUNTING.
CUSTOMERS SHOULD NOTIFY US WHEN ORDERING IF VERTICAL MOUNTING IS
REQUIRED. IF VERTICAL, THE MOTOR THRUST BEARING MUST NOT BE ALLOWED
TO TAKE ANY LOAD OTHER THAN THE WEIGHT OF THE ROTOR WITHOUT OUR APPROVAL.

CUSTOMER		
ORDER No.		
SERIAL No.		
FRAME SIZE		
Kw	R.P.M.	
Hz	PHASE 3	
VOLTS	POLES	
BRGS.	D.E	N.D.E
MOTOR NETT. WT.		Kg.
INSULATION CLASS		
TEMPERATURE RISE		° C
DESIGN AMBIENT TEMPERATURE		° C
HEATER WATTS & VOLTS (IF FITTED)		
- WATTS,		- VOLTS

REMARKS

ALL DIMENSIONS IN MILLIMETRES



**BROOK
CROMPTON**

NOTE!
2.5 ENDPLAY WILL BE PROVIDED FOR ENDTHRUST
PROTECTION WHEN CUSTOMERS NOTIFY US OF THEIR
INTENTION TO USE RIGID COUPLINGS AND DRIVEN
MACHINES WITHOUT ENDPLAY.

OUTLINE DIMENSIONS OF STANDARD FLANGE MOUNTED

METRIC A.C. MOTOR
TOTALLY ENCLOSED FAN VENTILATED.
FRAME SIZE:- W-DF355S-D 4-POLE UP.

SCALE	1:10	DATE
DRAWN		
CHECKED		
APPROVED		

DRG. No.	
REVISION:	DATE