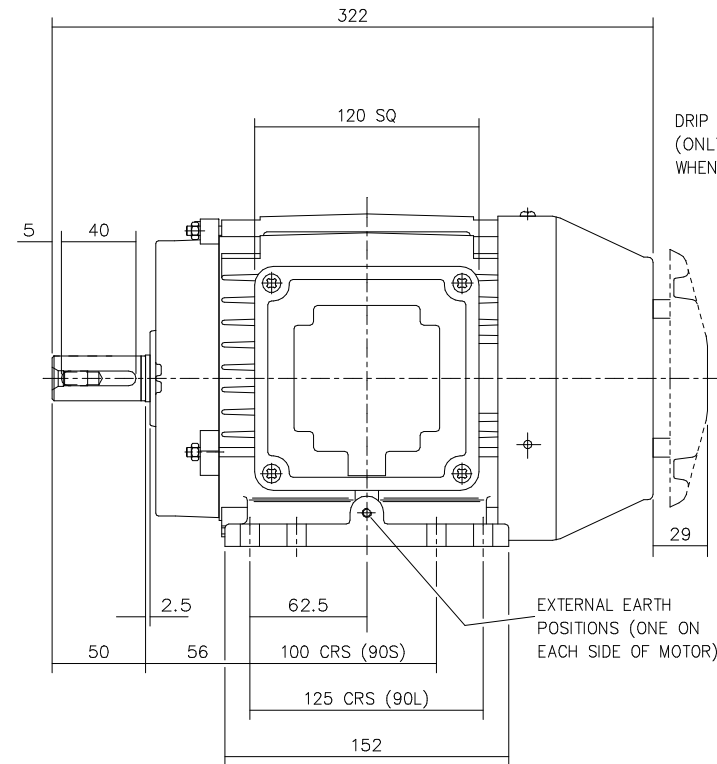
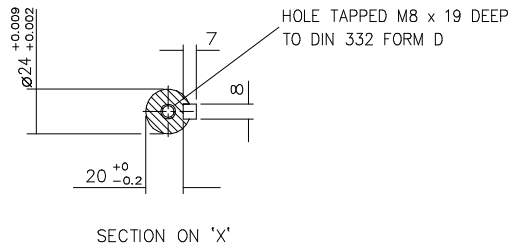
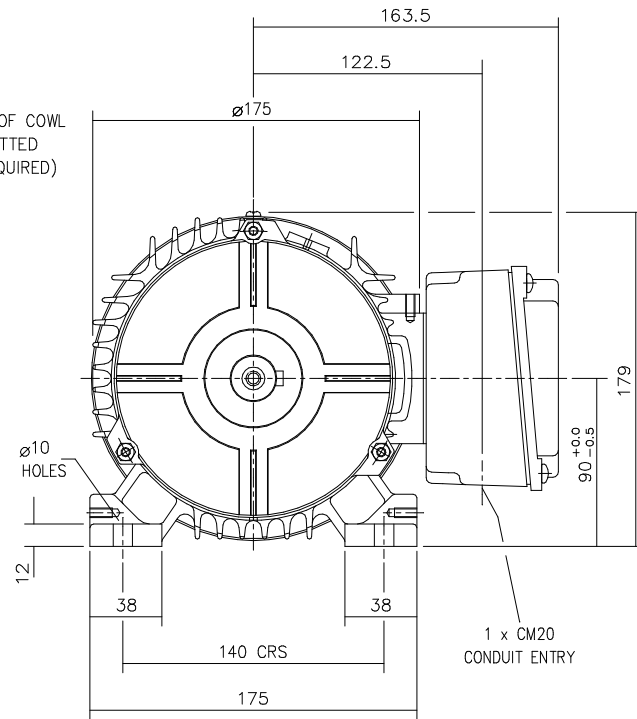


DRG. No. F90GF001/1  
 DRG. REF.



DRIP PROOF COWL  
 (ONLY FITTED  
 WHEN REQUIRED)

EXTERNAL EARTH  
 POSITIONS (ONE ON  
 EACH SIDE OF MOTOR)



STANDARD TERMINAL BOX POSITION IS 3 O'CLOCK AS SHOWN  
 CONDUIT ENTRIES: - TERMINAL BOX CAN BE ROTATED AT 90° INTERVALS  
 (CONDUIT ENTRY POSITION SHOWN FOR ILLUSTRATION ONLY)

CUSTOMER		
ORDER No.		
PART No.		
OUR ORDER No.		
FRAME SIZE		
KW.	RPM.	
Hz	PHASE	
VOLTS	POLES	
BRGS.	DE.	NDE.
MOTOR NETT WT.		Kg.
SPECIAL REMARKS		

ALL DIMENSIONS IN MILLIMETRES.



**BROOK CROMPTON**

Huddersfield, HD1 3LJ  
 ENGLAND

SHEET SIZE  
 A3

TITLE  
 OUTLINE DIMENSION DRAWING NEW DESIGN CAST IRON TOTALLY  
 ENCLOSED FAN COOLED 90S/L FRAME FOOT MOUNTED MOTOR.

	NAME	DATE
DRAWN	VLS	08-10-01
CHECKED	RR	08-10-01
SCALE	1: 2.5	

DRG. No.	F90GF001/1		
DRG. REF.			
REVISION:	RR	DATE	22/04/02